

## Elevator Disaster Countermeasures - In Case of Fire -

### Elevator Safety – What to Do in the Event of a Fire

It could be frightening if a fire occurs while you're in the elevator. But do not worry--our elevators are equipped with disaster prevention features and services to keep you safe.

#### A passenger returning home is traveling up in the elevator.

The passenger is traveling from the 1st to the 10th floor.

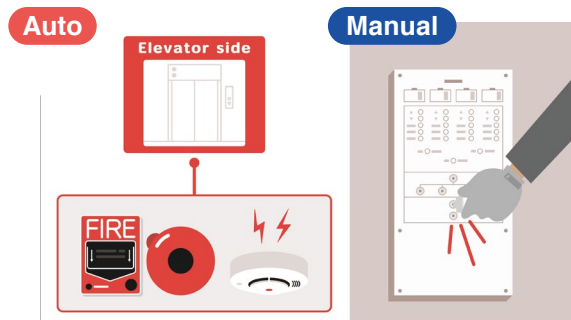


#### A fire has occurred.



#### 1 Fire Emergency Return (FER) operation is activated.

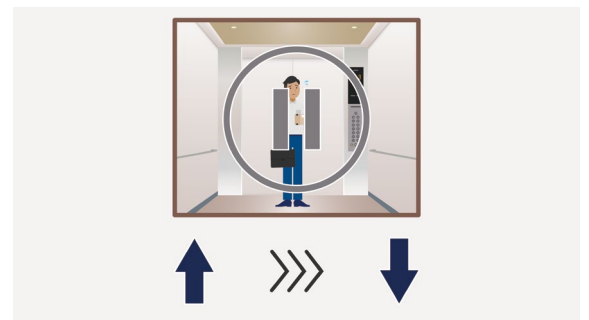
When Fire Emergency Return (FER) operation is activated,



\*There are two types of activation of the Fire Emergency Return operation.

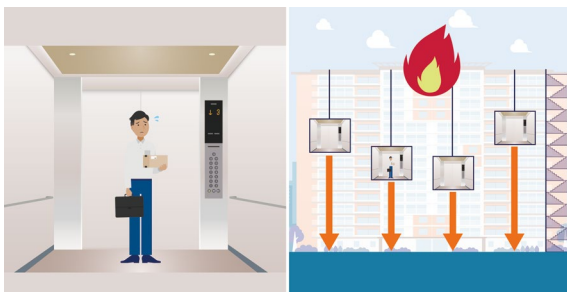
#### 2 The elevator changes direction to move to the evacuation floor.

The elevator will stop at nearest floor to change direction as needed. (The door will not open at this time.)



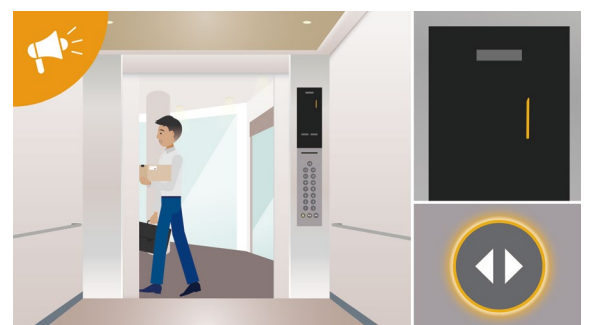
#### 3 The elevator moves to the evacuation floor.

The elevator will head straight to the evacuation floor. In case of a fire, evacuating people from the building takes top priority. Therefore, to ensure smooth evacuation, the evacuation floor should be pre-designated taking into account the best route to exit the building.



#### 4 The elevator stops at the evacuation floor, and the passenger evacuates.

"Ding, Ding, Fire emergency. Please exit when the doors open. x2"  
An announcement will prompt passengers to promptly evacuate from the elevator.



5

The inside of the elevator after the passengers have evacuated.



6

The elevator landing after the passengers have evacuated.

The elevator doors will remain open to prevent anyone from being trapped inside.



\* The REST indicator remains lit during Fire Emergency Return operation, indicating that the elevator is out of service.

Our elevators support passenger safety from the moment a Fire occurs until recovery is complete!



You can be prepared for disaster risks by strengthening building disaster prevention measures.

**Mitsubishi elevators help ensure passenger safety and peace of mind**

\*The above example situation shows typical specifications that are subject to change depending on applicable laws and requirements.

**MITSUBISHI ELECTRIC BUILDING SOLUTIONS CORPORATION**

HEAD OFFICE: TOKYO BLDG., 2-7-3, MARUNOUCHI, CHIYODA-KU, TOKYO 100-8310, JAPAN